



## Lauderdale Road, London W9

**£4,000 Per Month**

A Stunning and spacious, three bedroom, two bathroom lower ground floor apartment benefiting from its own entrance ideally located in this prime residential road located in the heart of Maida Vale moments from the famous Warrington Pub. Situated in a delightful period Victorian house the flat benefits from master bedroom with en-suite shower room, second double bedroom, third bedroom / study, family bathroom, reception with wood flooring, fitted kitchen and access to private patio. The apartment is also moments away from Maida Vale Underground station ( Bakerloo Line ), the open spaces of Paddington Recreation Ground and various surrounding shops and restaurants of Lauderdale Parade and Clifton Road.

Available from 6th July 2026 | Unfurnished  
EPC Rating: D | Council Tax: Westminster Band F

## Lauderdale Road, London W9

### Reception room:

20'4 x 14'7 (6.20m x 4.45m)



### Bedroom 2:

15'4 x 8'7 (4.67m x 2.62m)



### Kitchen:

9'11 x 9'9 (3.02m x 2.97m )



### Bedroom 3:

11'6 x 6'6 (3.51m x 1.98m)

### Bathroom:

12'9 x 6'10 (3.89m x 2.08m)



### Bedroom 1:

16'6 x 11'1 (5.03m x 3.38m)



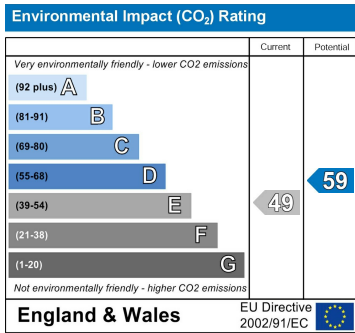
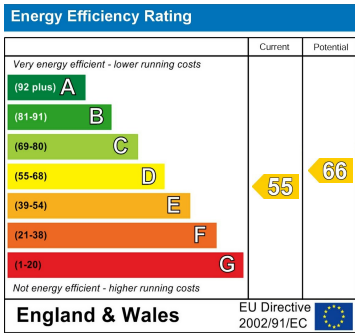
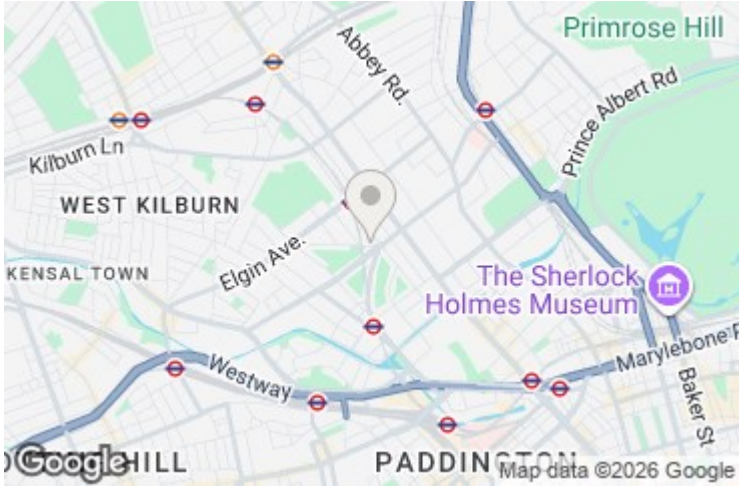
### Patio:

15'5 x 8'11 (4.70m x 2.72m)

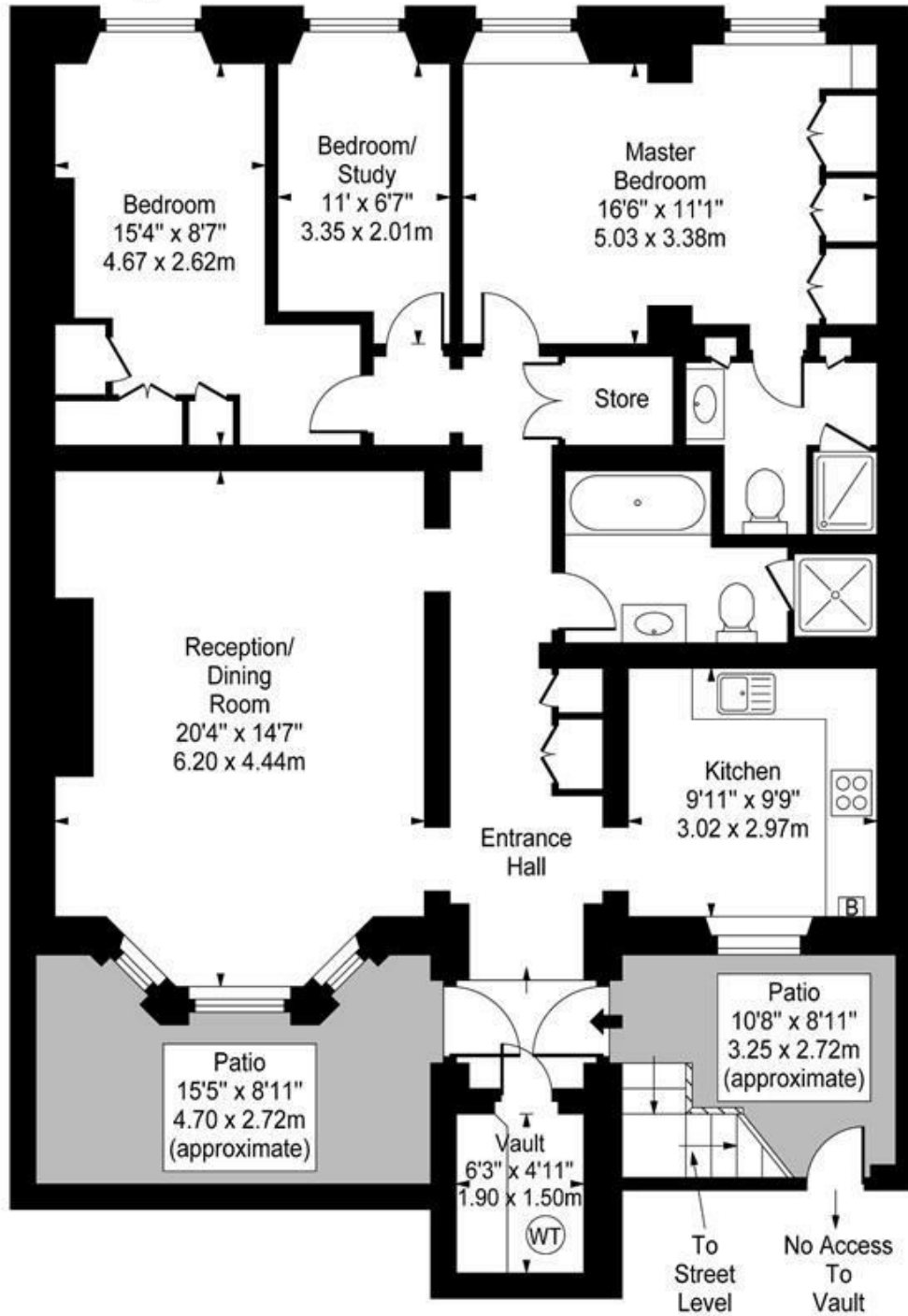
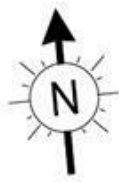
### Exterior:



# Lauderdale Road, London W9



# Lauderdale Road, W9



## Lower Ground Floor

Approx Gross Internal Area **1186 Sq Ft - 110.18 Sq M**

(Including Vault)

For Illustration Purposes Only - Not To Scale

[www.goldlens.co.uk](http://www.goldlens.co.uk)

Ref. No. 008538K

## MAIDA VALE

75 Castellain Road

Maida Vale

London W9 1EU

T 020 7266 5000

F 020 7266 1119

E [w9@comptonreeback.co.uk](mailto:w9@comptonreeback.co.uk)

Est. 1995

Registered Name: Compton Reeback Limited Registration Number: 6880098  
Registered Office: 75 Castellain Road, Maida Vale, London W9 1EU

Directors: Brian Compton & Julian Reeback

IMPORTANT NOTICE: All of the information is intended only as a guide to a prospective purchaser and not constitute part of an offer or contract. Any measurements or distances referred to herein are approximate only. Any information contained herein (whether in the text, plans or photographs) is given in good faith but should not be relied upon as being a statement or representation of fact. Should you proceed with the purchase of the property, your solicitor must verify these details. We have not carried out a detailed survey nor tested the services, appliances and specific fittings. In accordance with current legislation we would advise you that the measurements on these particulars are imperial. The formula for conversion to metric is as follows: 1' (one foot) = 30.48 (centimeters), 1m (one meter) = 3.29 (feet)

[comptonreeback.co.uk](http://comptonreeback.co.uk)