



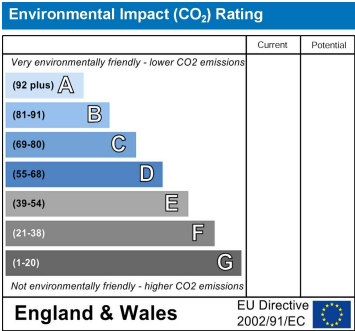
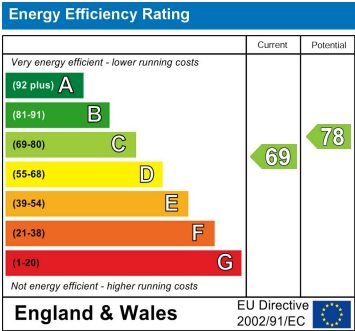
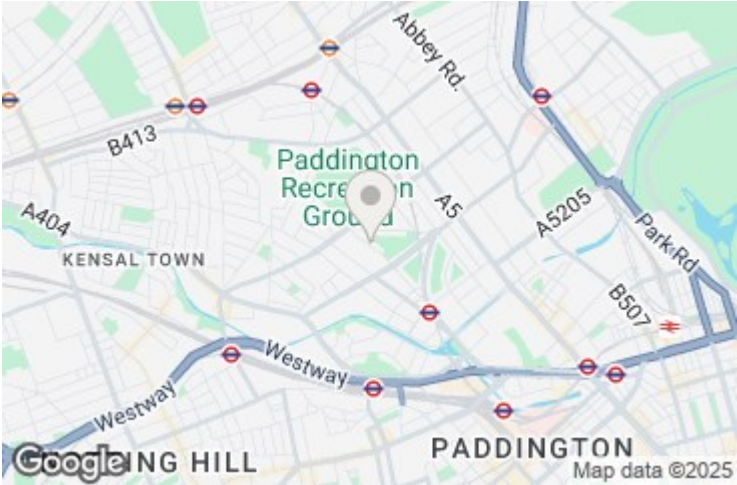
**Castellain Road, London W9**

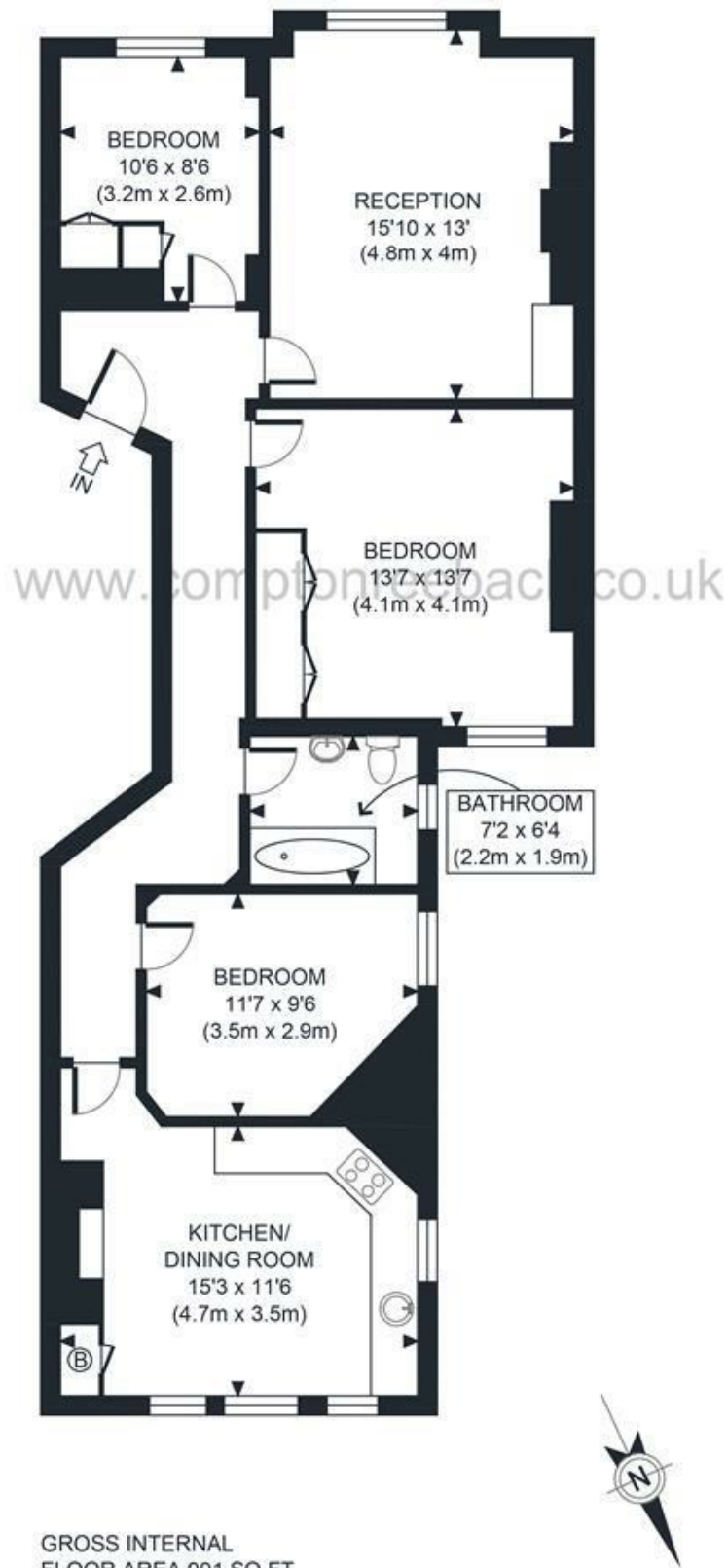
**£3,500 Per Month**


Compton Reeback are pleased to offer this exceptional three bedroom mansion flat within the sought after block that is Castellain Mansions. Situated on this quiet tree lined street in the heart of Maida Vale the property is equal walking distance to Maida Vale or Warwick Avenue Tube (Bakerloo Line) as well as a large selection of shops on Clifton Road and Elgin Avenue. Accommodation includes three double bedrooms, good size reception room, bright and spacious eat in fitted kitchen that over looks the communal gardens and a fully tiled family bathroom.

Available from early August 2025. Offered on a furnished basis.  
EPC Rating: C | Council Tax: Westminster Band F

Castellain Road, London W9





APPROX. GROSS INTERNAL FLOOR AREA 991 SQ FT / 92 SQM	
Disclaimer: Floor plan measurements are approximate and are for illustrative purposes only. While we do not doubt the floor plan accuracy and completeness, you or your advisors should conduct a careful, independent investigation of the property in respect of monetary valuation.	
date	26/08/21
	

#### MAIDA VALE

75 Castellain Road  
Maida Vale  
London W9 1EU  
T 020 7266 5000  
F 020 7266 1119  
E w9@comptonreeback.co.uk

Est. 1995

Registered Name: Compton Reeback Limited Registration Number: 6880098  
Registered Office: 75 Castellain Road, Maida Vale, London W9 1EU  
Directors: Brian Compton & Julian Reeback

IMPORTANT NOTICE: All of the information is intended only as a guide to a prospective purchaser and not constitute part of an offer or contract. Any measurements or distances referred to herein are approximate only. Any information contained herein (whether in the text, plans or photographs) is given in good faith but should not be relied upon as being a statement or representation of fact. Should you proceed with the purchase of the property, your solicitor must verify these details. We have not carried out a detailed survey nor tested the services, appliances and specific fittings. In accordance with current legislation we would advise you that the measurements on these particulars are imperial. The formula for conversion to metric is as follows: 1' (one foot) = 30.4cm (centimeters), 1m (one meter) = 3.29' (feet)

[comptonreeback.co.uk](http://comptonreeback.co.uk)