



Morshead Mansions, Maida Vale W9

£675 Per Week

Situated on the first floor in one of the most sought after mansion blocks in Maida Vale is this absolutely stunning bright and airy three bedroom flat. The property comprises of three double bedrooms, a fitted eat in kitchen with modern fixtures and fittings, a great size living room with feature fireplace and a fully tiled bathroom with separate W.C. The flat also benefits from wonderful high ceilings throughout, fantastic storage and well-manicured communal gardens. Morshead Road is an attractive tree lined street moments away from the open spaces of Paddington Recreation Ground and within easy reach of the a wide selection of shops, cafes and restaurants in Maida Vale as well as Maida Vale Underground Station (Bakerloo Line) being a short walk away. Offered to the market on a part-furnished basis and available towards the end of March. EPC RATING C70

Morshead Mansions, Maida Vale W9

Reception
Large (Large)



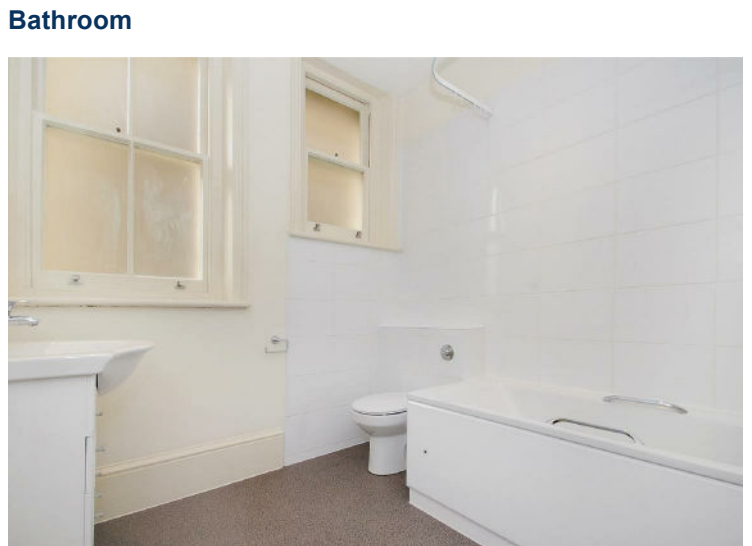
Bedroom 2
Double (Double)



Kitchen
Eat-In (Eat-In)



Bedroom 3
Double (Double)

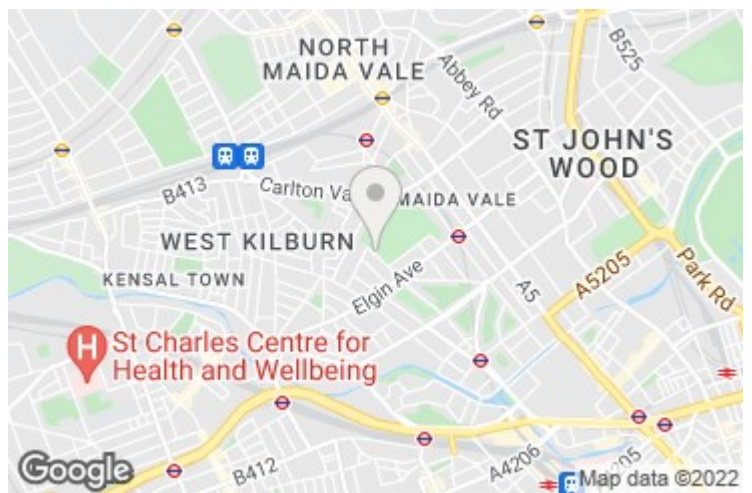


Bathroom

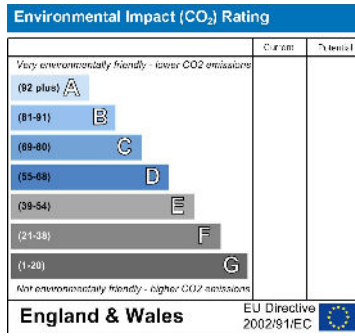
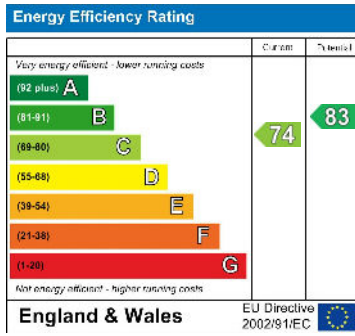
Bedroom 1
Double (Double)

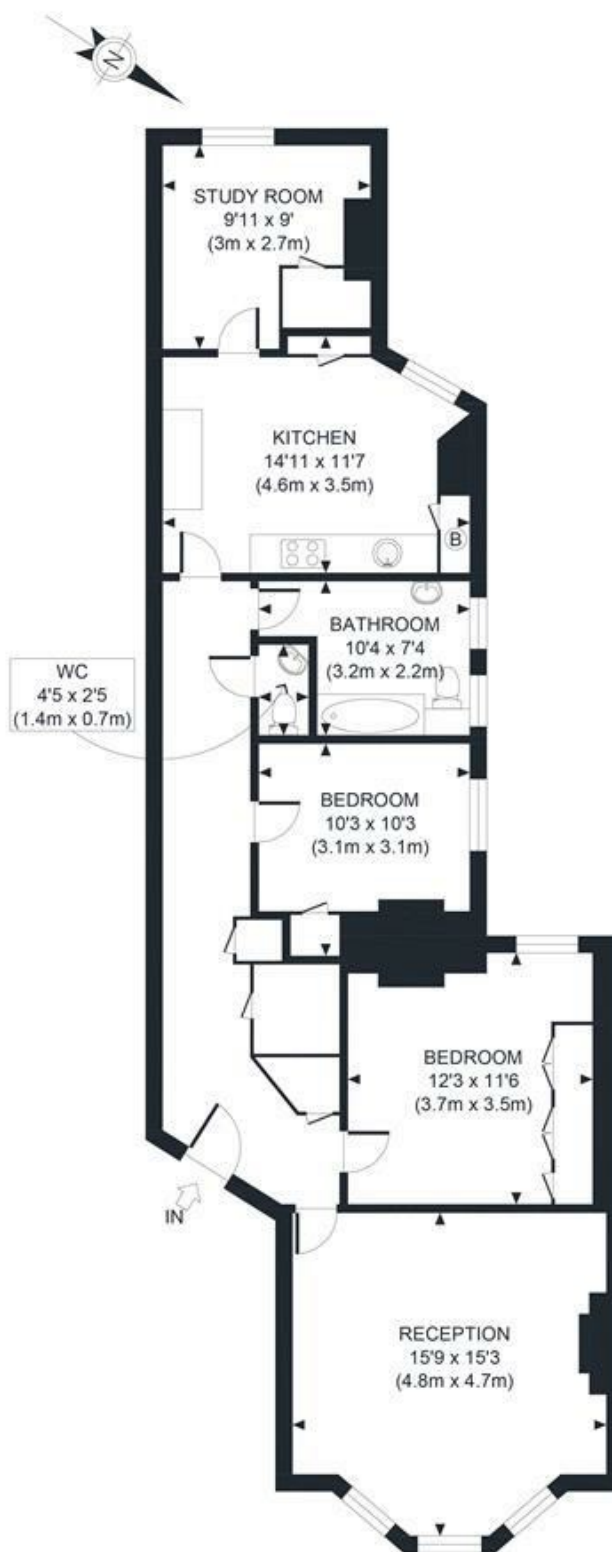


Exterior



Morshead Mansions, Maida Vale W9





FIRST FLOOR
GROSS INTERNAL
FLOOR AREA 1007 SQ FT

APPROX. GROSS INTERNAL FLOOR AREA 1007 SQ FT / 94 SQM

Ref:

Copyright **photoplan**

Disclaimer: Floor plan measurements are approximate and are for illustrative purposes only. While we do not doubt the floor plan accuracy and completeness, you or your advisors should conduct a careful, independent investigation of the property in respect of monetary valuation

MAIDA VALE

75 Castellain Road
Maida Vale

London W9 1EU

T 020 7266 5000

F 020 7266 1119

E w9@comptonreeback.co.uk

Est. 1995

Registered Name: Compton Reeback Limited Registration Number: 6880098
Registered Office: 75 Castellain Road, Maida Vale, London W9 1EU

Directors: Brian Compton & Julian Reeback

IMPORTANT NOTICE: All of the information is intended only as a guide to a prospective purchaser and not constitute part of an offer or contract. Any measurements or distances referred to herein are approximate only. Any information contained herein (whether in the text, plans or photographs) is given in good faith but should not be relied upon as being a statement or representation of fact. Should you proceed with the purchase of the property, your solicitor must verify these details. We have not carried out a detailed survey nor tested the services, appliances and specific fittings. In accordance with current legislation we would advise you that the measurements on these particulars are imperial. The formula for conversion to metric is as follows: 1' (one foot) = 30.48cm (centimeters), 1m (one meter) = 3.28' (feet)

comptonreeback.co.uk