



Biddulph Mansions, Maida Vale W9

£850,000

Compton Reeback are pleased to offer for sale this spacious, bright three bedroom, lower ground floor apartment with views over communal gardens in this popular red brick mansion block. The apartment will require some refurbishment and updating and has a spacious reception room with bay window, spacious master bedroom, further two double bedrooms, family bathroom, fitted kitchen. Biddulph Mansions has lovely communal gardens and is ideally located close to the open spaces of Paddington Recreation Ground, local shops, cafes and restaurants of both Elgin Avenue and Lauderdale Parade as well as being a short distance to Maida Vale Underground Station (Bakerloo Line). Share of Freehold with Leasehold with 952 years unexpired, Council Tax Band E.

Biddulph Mansions, Maida Vale W9

Reception



Bedroom 2



Kitchen



Bedroom 3



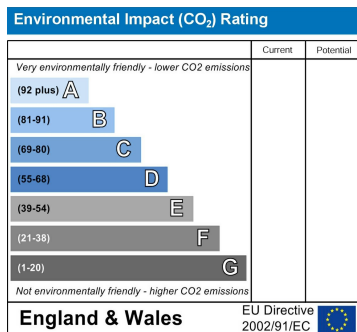
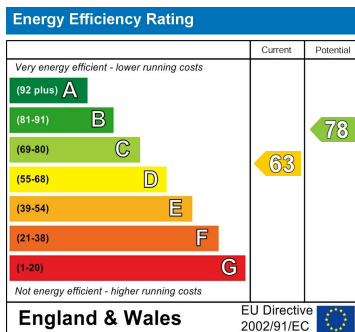
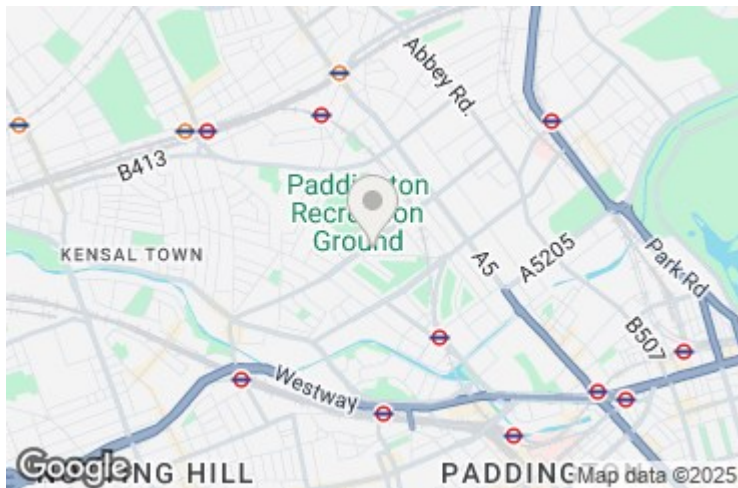
Bedroom 1



Bathroom

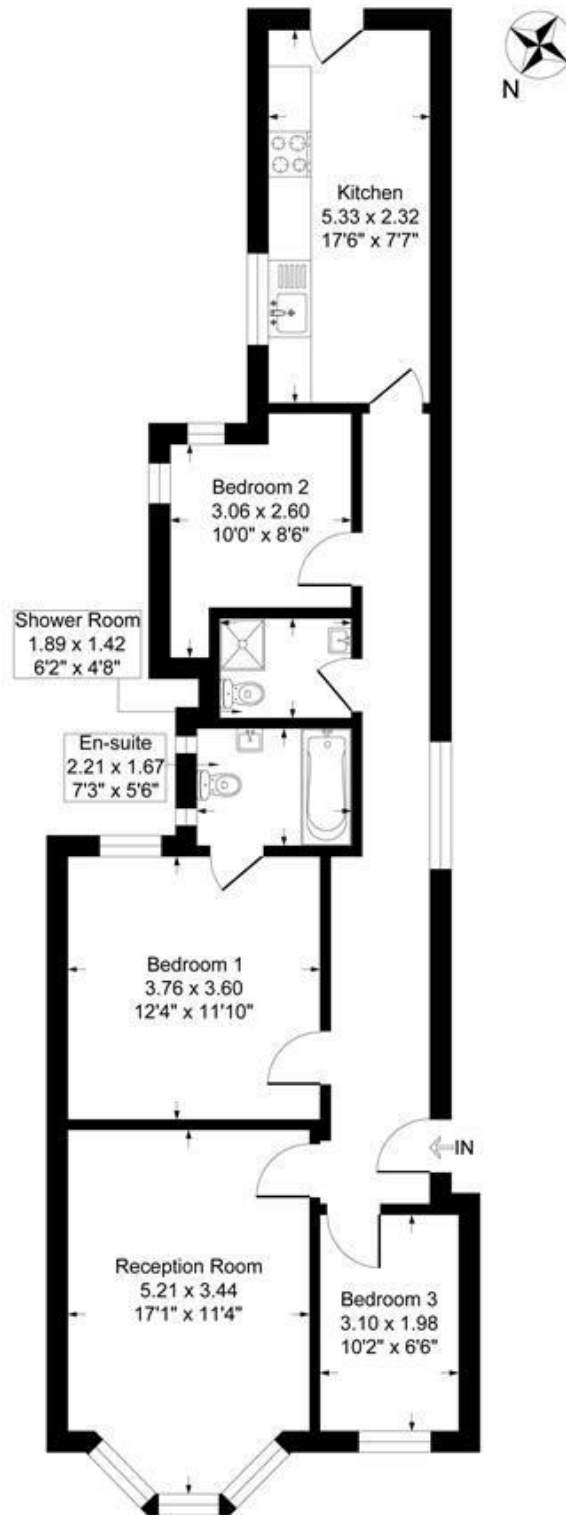


Biddulph Mansions, Maida Vale W9



Biddulph Mansions, Elgin Avenue, London, W9

Approximate Gross Internal Floor Area = 79.6 sq m / 857 sq ft



Basement

Illustration for identification purposes only, measurements are approximate, not to scale.

MAIDA VALE

75 Castellain Road
Maida Vale

London W9 1EU

T 020 7266 5000

F 020 7266 1119

E w9@comptonreeback.co.uk

Est. 1995

Registered Name: Compton Reeback Limited Registration Number: 6880098
Registered Office: 75 Castellain Road, Maida Vale, London W9 1EU

Directors: Brian Compton & Julian Reeback

IMPORTANT NOTICE: All of the information is intended only as a guide to a prospective purchaser and not constitute part of an offer or contract. Any measurements or distances referred to herein are approximate only. Any information contained herein (whether in the text, plans or photographs) is given in good faith but should not be relied upon as being a statement or representation of fact. Should you proceed with the purchase of the property, your solicitor must verify these details. We have not carried out a detailed survey nor tested the services, appliances and specific fittings. In accordance with current legislation we would advise you that the measurements on these particulars are imperial. The formula for conversion to metric is as follows: 1' (one foot) = 30.48cm (centimeters), 1m (one meter) = 3.29'(feet)

comptonreeback.co.uk